

# Outdoor

Katalog 2020



**SpektraLED GmbH**

Erlau 5 | 4770 Andorf, Austria

+43 (0) 7766 50032 | [office@spektraled.at](mailto:office@spektraled.at)

[www.spektraled.at](http://www.spektraled.at)

---

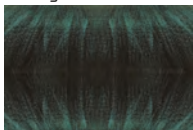


# Outdoor Lighting

<b>OLWEN</b>	OLWEN PTM	8	OLWEN L033	8	OLWEN L095	8	OLWEN L180 OLWEN L200 OLWEN L300	8	
	OLWEN II WDM	12	OLWEN II SSD	12	OLWEN II P1	12	OLWEN II P2	12	
	<b>SABELA</b>	SABELA WMD	22	SABELA L035 SABELA L070 SABELA L090	22	<b>MEGAN</b>	MEGAN WMD		26
		IRIA WMD	34	IRIA L095	34		<b>SALLA</b>	SALLA WMD	38
JORY WALL S JORY WALL M	48 50	JORY FLOOD S	52	JORY FLOOD M	54	<b>NESTA</b>		NESTA S	
<b>HARM</b>	HARM G1 HARM W1	68 70	HARM G2 HARM W2	68 80	HARM G3 HARM W3		68 70	HARM G4 HARM W4	

## COLOUR VARIANTS

NGV  
black/green



NGA  
black/silver



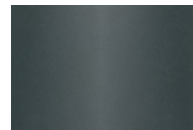
NGO  
black/gold



NGR  
black/copper











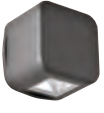

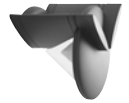












NGG  
black

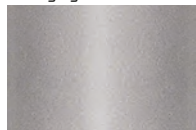


BGG  
white

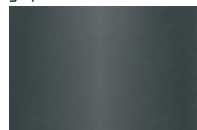


OLWEN I WMD  10	OLWEN I SSD  10	OLWEN I P1  10	OLWEN I P2  10	OLWEN I P3  10
<b>LOIS</b>	LOIS I WMD  16	LOIS I L035 LOIS I L070 LOIS I L090  16	LOIS II WMD  18	LOIS II L060 LOIS II L090 LOIS II L115 LOIS II L240  18
MEGAN L018 MEGAN L035 MEGAN L070  26	<b>YANN</b>	YANN WMD  30	YANN L012 YANN L035 YANN L070  30	<b>IRIA</b>
<b>NOELA</b>	NOELA WMD  42	NOELA L050 NOELA L075 NOELA L100  42	<b>JORY</b>	JORY  46
NESTA M NESTA M ASYM  60	<b>ELAIN</b>	ELAIN W0 ELAIN W1  64	ELAIN W2 ELAIN W3  64	ELAIN W4  64
HARM G5 HARM W5  68 70	HARM G6 HARM W6  68 70	<b>ENID</b>	ENID W1  74	ENID W2  74

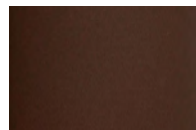
ALL  
metal grey



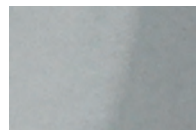
NHG  
graphite



OXI  
oxide

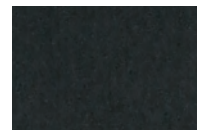


INX  
inox - stainless steel



Anodized finishing

BRZ  
bronze



Anodized finishing

COUNTRY COLLECTION  
wood





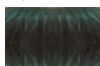
**OLWEN**



# OLWEN

COLOUR VARIANTS:

NGV



NGA



NGR



NGG



NHG

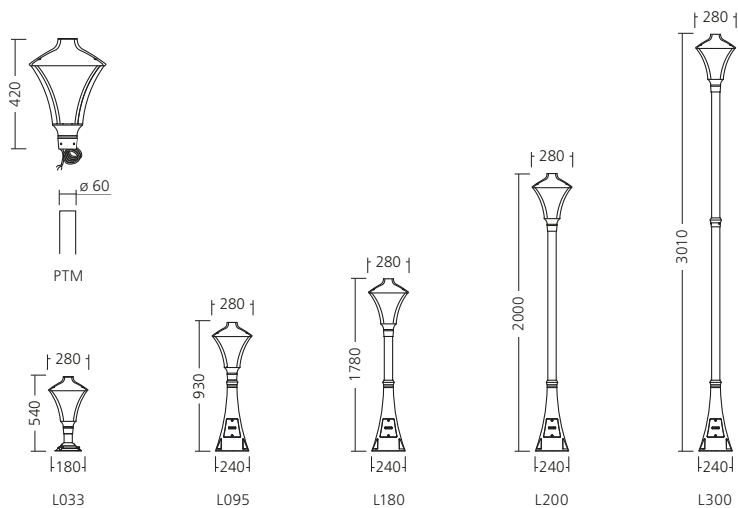


OXI



TYPE	MOUNTING TYPE	NET LUMEN OUTPUT (at Ta = 25 °C) (lm)	POWER CONSUMPTION (W)	SYSTEM EFFICACY (lm/W)	COLOUR RENDERING INDEX CRI (Ra)	CORRELATED COLOUR TEMPERATURE CCT (K)	BEAM ANGLE (C0-180, C90-270)	WEIGHT (kg)
OLWEN	PMT	1800	30	60	85	4000	TRE	4,8
OLWEN	PMT	1750	30	58	85	3000	TRE	4,8
OLWEN L033	GMD	1800	30	60	85	4000	TRE	5,2
OLWEN L033	GMD	1750	30	58	85	3000	TRE	5,2
OLWEN L095	GMD	1800	30	60	85	4000	TRE	6,0
OLWEN L095	GMD	1750	30	58	85	3000	TRE	6,0
OLWEN L180	GMD	1800	30	60	85	4000	TRE	9,6
OLWEN L180	GMD	1750	30	58	85	3000	TRE	9,6
OLWEN L200	GMD	1800	30	60	85	4000	TRE	9,8
OLWEN L200	GMD	1750	30	58	85	3000	TRE	9,8
OLWEN L300	GMD	1800	30	60	85	4000	TRE	10,5
OLWEN L300	GMD	1750	30	58	85	3000	TRE	10,5

Luminous flux tolerance +/- 10%.



**Mounting**

Pole mounted (PMT)  
Ground mounted (GMD)

**Light source**

LED

**Optical system**

Transparent reflector (TRE)

**Wiring**

Electronic control gear FIX (ECG)

**Materials**

Housing: die-cast aluminium  
Diffuser: transparent PC

**Surface finish**

NGG / NGV / NGA / NGR / NHG / OXI

**Service lifetime**

50,000 hours/L70/B50

**Ambient temperature**

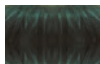
From -25 °C to +35 °C

# OLWEN I



COLOUR VARIANTS:

NGV



NGA



NGR



NGG



NHG



OXI



TYPE	MOUNTING TYPE	NET LUMEN OUTPUT (at Ta = 25 °C) (lm)	POWER CONSUMPTION (W)	SYSTEM EFFICACY (lm/W)	COLOUR RENDERING INDEX CRI (Ra)	CORRELATED COLOUR TEMPERATURE CCT (K)	BEAM ANGLE (C0-180, C90-270)	WEIGHT (kg)
OLWEN I	WMD	1800	30	60	85	4000	TRE	6,3
OLWEN I	SSD	1800	30	60	85	4000	TRE	4,5
OLWEN I	WMD	1750	30	58	85	3000	TRE	6,3
OLWEN I	SSD	1750	30	58	85	3000	TRE	4,5
OLWEN I P1	GMD	1800	30	60	85	4000	TRE	13,7
OLWEN I P2	GMD	3650	60	60	85	4000	TRE	18,7
OLWEN I P3	GMD	5450	90	60	85	4000	TRE	24,0
OLWEN I P1	GMD	1750	30	58	85	3000	TRE	13,7
OLWEN I P2	GMD	3450	60	58	85	3000	TRE	18,7
OLWEN I P3	GMD	5150	90	58	85	3000	TRE	24,0

Luminous flux tolerance +/- 10%.



P3



P2



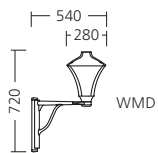
P1



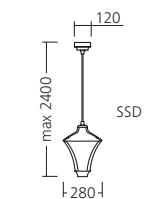
WMD



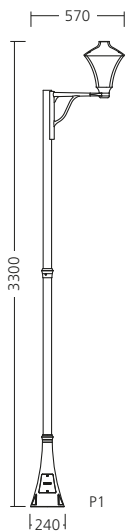
SSD



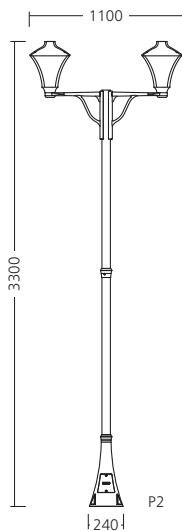
WMD



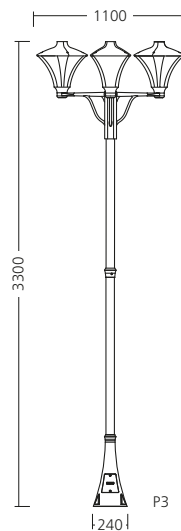
SSD



P1



P2



P3

#### Mounting

Wall mounted (WMD)  
Suspended (SSD)  
Ground mounted (GMD)

#### Light source

LED

#### Optical system

Transparent reflector (TRE)

#### Wiring

Electronic control gear FIX (ECG)

#### Materials

Housing: die-cast aluminium  
Diffuser: transparent PC

#### Surface finish

NGG / NGV / NGA / NGR / NHG / OXI

#### Service lifetime

50,000 hours/L70/B50

#### Ambient temperature

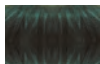
From -25 °C to +35 °C

# OLWEN II



COLOUR  
VARIANTS:

NGV



NGA



NGR



NGG



NHG



OXI



TYPE	MOUNTING TYPE	NET LUMEN OUTPUT (at Ta = 25 °C) (lm)	POWER CONSUMPTION (W)	SYSTEM EFFICACY (lm/W)	COLOUR RENDERING INDEX CRI (Ra)	CORRELATED COLOUR TEMPERATURE CCT (K)	BEAM ANGLE (C0-180, C90- 270)	WEIGHT (kg)
OLWEN II	WMD	1900	30	64	85	3000	TRE	6,3
OLWEN II	WMD	2000	30	68	85	4000	TRE	6,3
OLWEN II	SSD	1900	30	64	85	3000	TRE	4,2
OLWEN II	SSD	2000	30	68	85	4000	TRE	4,2
OLWEN II	SFD	1900	30	64	85	3000	TRE	4,0
OLWEN II	SFD	2000	30	68	85	4000	TRE	4,0
OLWEN II P1	GMD	1900	30	64	85	3000	TRE	13,7
OLWEN II P1	GMD	2000	30	68	85	4000	TRE	13,7
OLWEN II P2	GMD	3800	60	64	85	3000	TRE	18,7
OLWEN II P2	GMD	4000	60	68	85	4000	TRE	18,7
OLWEN II P3	GMD	5700	90	64	85	3000	TRE	23,7
OLWEN II P3	GMD	6000	90	68	85	4000	TRE	23,7

Luminous flux tolerance +/- 10%.

P3



P2



P1



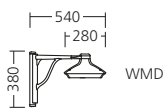
WMD



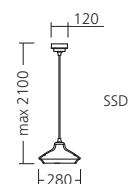
SSD



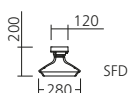
SFD



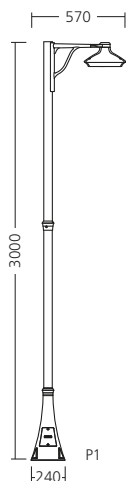
WMD



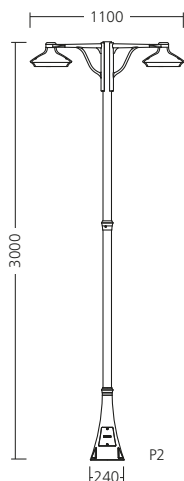
SSD



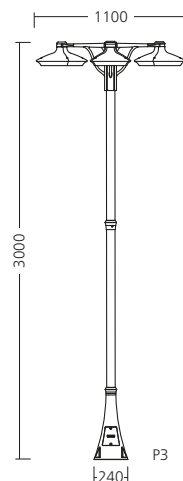
SFD



P1



P2



P3

**Mounting**

Wall mounted (WMD)  
Suspended (SSD)  
Surface (SFD)  
Ground mounted (GMD)

**Light source**

LED

**Optical system**

Transparent reflector (TRE)

**Wiring**

Electronic control gear FIX (ECG)

**Materials**

Housing: die-cast aluminium  
Diffuser: transparent PC

**Surface finish**

NGG / NGV / NGA / NGR / NHG / OXI

**Service lifetime**

50,000 hours/L70/B50

**Ambient temperature**

From -25 °C to +35 °C



**LOIS**



# LOIS I

COLOUR  
VARIANTS:

ALL



NHG



OXI

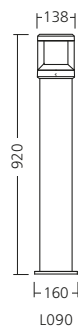
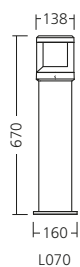
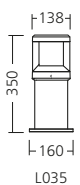
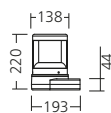


COUNTRY



TYPE	MOUNTING TYPE	NET LUMEN OUTPUT (at Ta = 25 °C) (lm)	POWER CONSUMPTION (W)	SYSTEM EFFICACY (lm/W)	COLOUR RENDERING INDEX CRI (Ra)	CORRELATED COLOUR TEMPERATURE CCT (K)	BEAM ANGLE (C0-180, C90- 270)	WEIGHT (kg)
LOIS I	WMD	800	10	80	80	4000	OPD	2,6
LOIS I	WMD	720	10	72	80	3000	OPD	2,6
LOIS I L035	GMD	800	10	80	80	4000	OPD	2,5
LOIS I L035	GMD	720	10	72	80	3000	OPD	2,5
LOIS I L070	GMD	800	10	80	80	4000	OPD	3,4
LOIS I L070	GMD	720	10	72	80	3000	OPD	3,4
LOIS I L090	GMD	800	10	80	80	4000	OPD	4,0
LOIS I L090	GMD	720	10	72	80	3000	OPD	4,0

Luminous flux tolerance +/- 10%.



**Mounting**

Wall mounted (WMD)  
Ground mounted (GMD)

**Light source**

LED

**Optical system**

Opal diffuser (OPD)

**Wiring**

Electronic control gear FIX (ECG)

**Materials**

Housing: die-cast aluminium  
Diffuser: transparent PC

**Surface finish**

ALL / NHG / OXI / Country collection

**Service lifetime**

50,000 hours/L70/B50

**Ambient temperature**

From -25 °C to +35 °C

# LOIS II

COLOUR  
VARIANTS:

ALL



NHG



OXI

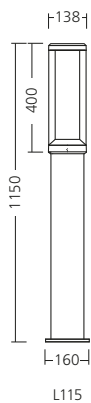
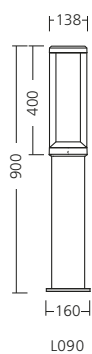
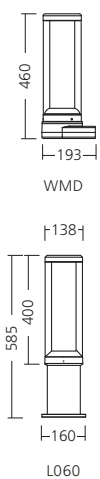


COUNTRY



TYPE	MOUNTING TYPE	NET LUMEN OUTPUT (at Ta = 25 °C) (lm)	POWER CONSUMPTION (W)	SYSTEM EFFICACY (lm/W)	COLOUR RENDERING INDEX CRI (Ra)	CORRELATED COLOUR TEMPERATURE CCT (K)	BEAM ANGLE (C0-180, C90- 270)	WEIGHT (kg)
LOIS II	WMD	800	10	80	80	4000	OPD	3,6
LOIS II	WMD	720	10	72	80	3000	OPD	3,6
LOIS II L060	GMD	800	10	80	80	4000	OPD	4,0
LOIS II L060	GMD	720	10	72	80	3000	OPD	4,0
LOIS II L090	GMD	800	10	80	80	4000	OPD	4,7
LOIS II L090	GMD	720	10	72	80	3000	OPD	4,7
LOIS II L115	GMD	800	10	80	80	4000	OPD	5,5
LOIS II L115	GMD	720	10	72	80	3000	OPD	5,5
LOIS II L240	GMD	800	10	80	80	4000	OPD	9,3
LOIS II L240	GMD	720	10	72	80	3000	OPD	9,3

Luminous flux tolerance +/- 10%.



**Mounting**

Wall mounted (WMD)  
Ground mounted (GMD)

**Light source**

LED

**Optical system**

Opal diffuser (OPD)

**Wiring**

Electronic control gear FIX (ECG)

**Materials**

Housing: die-cast aluminium

Diffuser: transparent PC

**Surface finish**

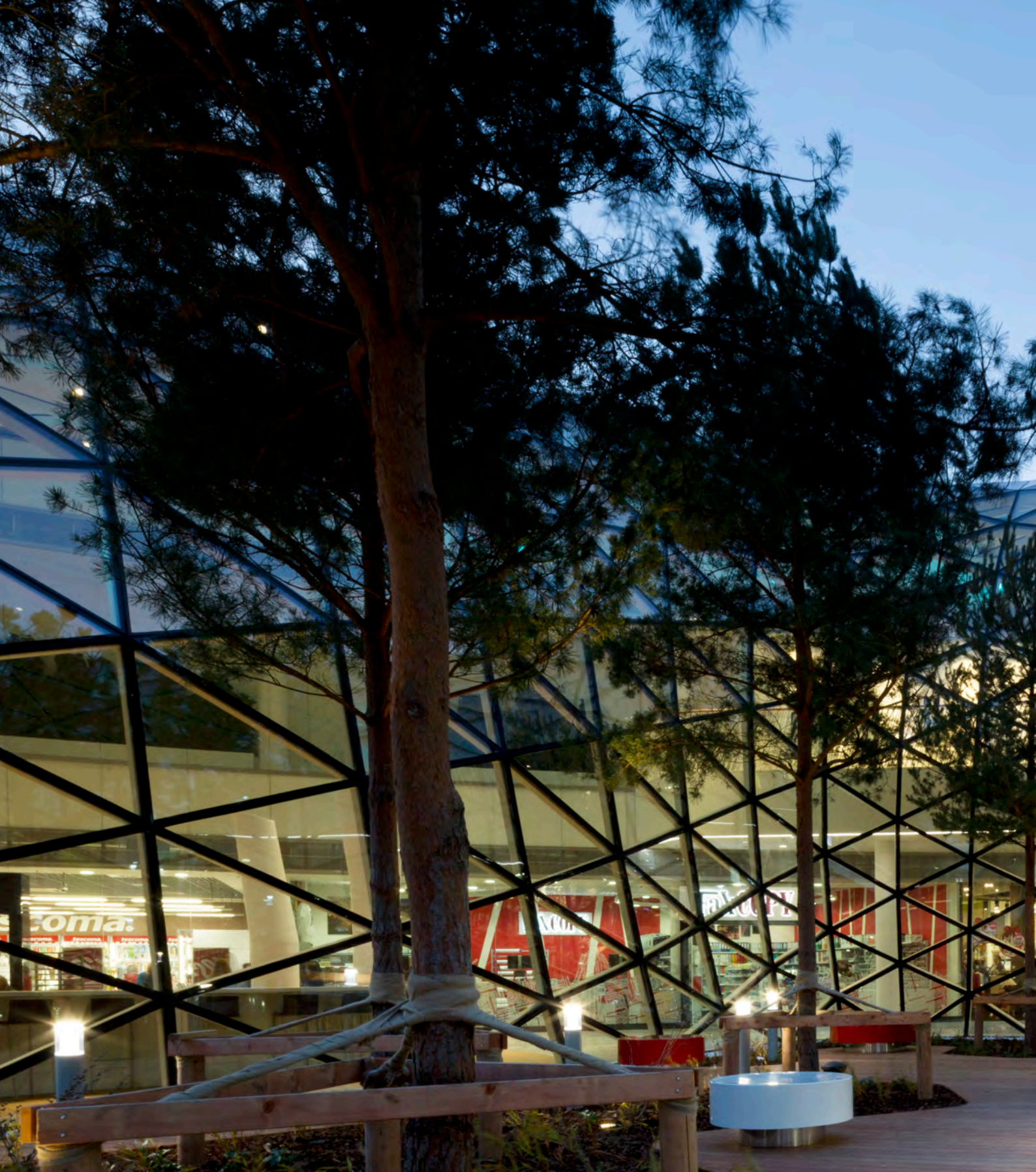
ALL / NHG / OXI / Country collection

**Service lifetime**

50,000 hours/L70/B50

**Ambient temperature**

From -25 °C to +35 °C



**SABELA**



# SABELA

COLOUR  
VARIANTS:

NHG



OXI

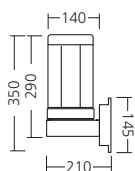


COUNTRY

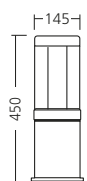


TYPE	MOUNTING TYPE	NET LUMEN OUTPUT (at Ta = 25 °C) (lm)	POWER CONSUMPTION (W)	SYSTEM EFFICACY (lm/W)	COLOUR RENDERING INDEX CRI (Ra)	CORRELATED COLOUR TEMPERATURE CCT (K)	BEAM ANGLE (C0-180, C90- 270)	WEIGHT (kg)
SABELA	WMD	800	10	80	80	4000	OPD	3,7
SABELA	WMD	720	10	72	80	3000	OPD	3,7
SABELA L045	GMD	800	10	80	80	4000	OPD	4,1
SABELA L045	GMD	720	10	72	80	3000	OPD	4,1
SABELA L075	GMD	800	10	80	80	4000	OPD	6,0
SABELA L075	GMD	720	10	72	80	3000	OPD	6,0
SABELA L100	GMD	800	10	80	80	4000	OPD	7,5
SABELA L100	GMD	720	10	72	80	3000	OPD	7,5
SABELA L125	GMD	800	10	80	80	4000	OPD	9,0
SABELA L125	GMD	720	10	72	80	3000	OPD	9,0

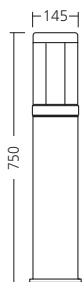
Luminous flux tolerance +/- 10%.



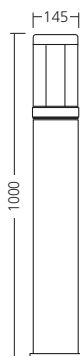
WMD (IP43)



L045 (IP65)



L075 (IP65)



L100 (IP65)



L125 (IP65)

#### Mounting

Wall mounted (WMD)  
Ground mounted (GMD)

#### Light source

LED

#### Optical system

Opal diffuser (OPD)

#### Wiring

Electronic control gear FIX (ECG)

#### Materials

Housing: die-cast aluminium

Diffuser: transparent PC

#### Surface finish

NHG / OXI / Country collection

#### Service lifetime

50,000 hours/L70/B50

#### Ambient temperature

From -25 °C to +35 °C



# MEGAN



# MEGAN

COLOUR  
VARIANTS:

NHG

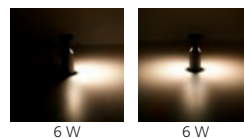
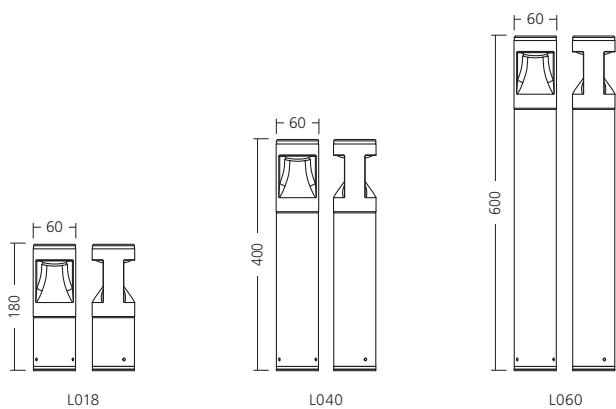


OXI



TYPE	MOUNTING TYPE	NET LUMEN OUTPUT (at Ta = 25 °C) (lm)	POWER CONSUMPTION (W)	SYSTEM EFFICACY (lm/W)	COLOUR RENDERING INDEX CRI (Ra)	CORRELATED COLOUR TEMPERATURE CCT (K)	BEAM ANGLE (C0-180, C90- 270)	WEIGHT (kg)
MEGAN L018	WMD	110	6	18	80	3000	OPD	0,7
MEGAN L018	WMD	215	6	36	80	3000	OPD	0,7
MEGAN L040	GMD	110	6	18	80	3000	OPD	1,0
MEGAN L040	GMD	215	6	36	80	3000	OPD	1,0
MEGAN L060	GMD	110	6	18	80	3000	OPD	1,5
MEGAN L060	GMD	215	6	36	80	3000	OPD	1,5

Luminous flux tolerance +/- 10%.



**Mounting**

Wall mounted (WMD)  
Ground mounted (GMD)

**Light source**

LED

**Optical system**

Opal PC

**Wiring**

Electronic control gear FIX (ECG)

**Materials**

Housing: die-cast and extruded aluminium

Diffuser: opal PC

**Surface finish**

NHG / OXI

**Service lifetime**

50,000 hours/L70/B50

**Ambient temperature**

From -25 °C to +35 °C



**YANN**





# YANN

COLOUR  
VARIANTS:

NHG

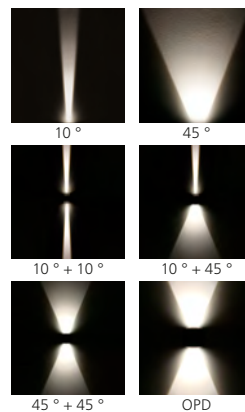
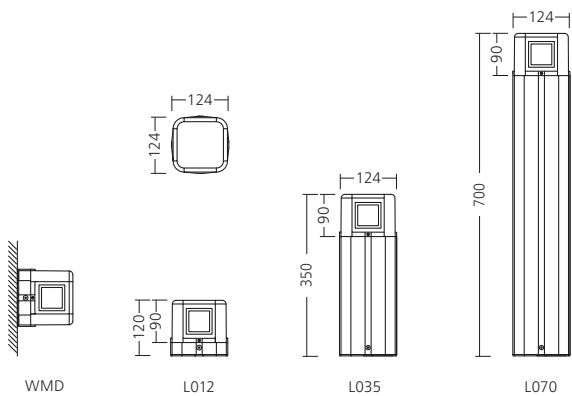


OXI



TYPE	MOUNTING TYPE	NET LUMEN OUTPUT (at Ta = 25 °C) (lm)	POWER CONSUMPTION (W)	SYSTEM EFFICACY (lm/W)	COLOUR RENDERING INDEX CRI (Ra)	CORRELATED COLOUR TEMPERATURE CCT (K)	BEAM ANGLE (C0-180, C90- 270)	WEIGHT (kg)
YANN	WMD	150	5	30	80	3000	45°	1,0
YANN	WMD	310	10	31	80	3000	45°+45°	1,0
YANN	WMD	300	10	30	80	3000	45°	1,0
YANN	WMD	170	10	17	80	3000	10°+45°	1,0
YANN	WMD	15	5	3	80	3000	10°	1,0
YANN	WMD	30	10	3	80	3000	10°+10°	1,0
YANN	WMD	30	10	3	80	3000	10°	1,0
YANN L012	GMD	280	10	28	80	3000	OPD	1,5
YANN L035	GMD	280	10	28	80	3000	OPD	2,5
YANN L070	GMD	280	10	28	80	3000	OPD	4,1

Luminous flux tolerance +/- 10%.



**Mounting**  
 Wall mounted (WMD)  
 Ground mounted (GMD)

**Light source**  
 LED

**Optical system**  
 Reflector

**Wiring**  
 Electronic control gear FIX (ECG)

**Materials**  
 Housing: die-cast aluminium  
 Diffuser: transparent PC

**Surface finish**  
 NHG / OXI

**Service lifetime**  
 50,000 hours/L70/B50

**Ambient temperature**  
 From -25 °C to +35 °C



**IRIA**



# IRIA

COLOUR  
VARIANTS:

NHG

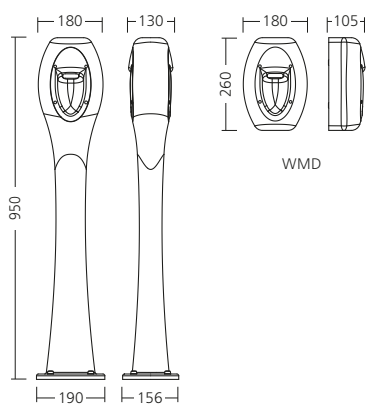


OXI



TYPE	MOUNTING TYPE	NET LUMEN OUTPUT (at Ta = 25 °C) (lm)	POWER CONSUMPTION (W)	SYSTEM EFFICACY (lm/W)	COLOUR RENDERING INDEX CRI (Ra)	CORRELATED COLOUR TEMPERATURE CCT (K)	BEAM ANGLE (C0-180, C90- 270)	WEIGHT (kg)
IRIA	WMD	325	8	41	80	4000	ASY	2,4
IRIA	WMD	310	8	39	80	3000	ASY	2,4
IRIA L095	GMD	650	17	38	80	4000	ASY	6,8
IRIA L095	GMD	600	17	35	80	3000	ASY	6,8
IRIA L095	GMD	325	8	41	80	4000	ASY	6,8
IRIA L095	GMD	310	8	39	80	3000	ASY	6,8

Luminous flux tolerance +/- 10%.



L095



WDM



8 W



17 W

**Mounting**

Wall mounted (WMD)  
Ground mounted (GMD)

**Light source**

LED

**Optical system**

Reflector (ASYMMETRIC)

**Wiring**

Electronic control gear FIX (ECG)

**Materials**

Housing: die-cast aluminium

Diffuser: opal PC

**Surface finish**

NHG / OXI

**Service lifetime**

50,000 hours/L70/B50

**Ambient temperature**

From -25 °C to +35 °C



**SALLA**



# SALLA

COLOUR VARIANTS:

ALL



NHG



OXI

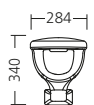
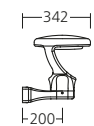


COUNTRY

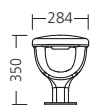


TYPE	MOUNTING TYPE	NET LUMEN OUTPUT (at Ta = 25 °C) (lm)	POWER CONSUMPTION (W)	SYSTEM EFFICACY (lm/W)	COLOUR RENDERING INDEX CRI (Ra)	CORRELATED COLOUR TEMPERATURE CCT (K)	BEAM ANGLE (C0-180, C90-270)	WEIGHT (kg)
SALLA	GMD	840	10	84	80	4000	OPD	3
SALLA	GMD	730	10	73	80	3000	OPD	3
SALLA L035	GMD	840	10	84	80	4000	OPD	3,5
SALLA L035	GMD	730	10	73	80	3000	OPD	3,5
SALLA L050	GMD	840	10	84	80	4000	OPD	4
SALLA L050	GMD	730	10	73	80	3000	OPD	4
SALLA L075	GMD	840	10	84	80	4000	OPD	4,5
SALLA L075	GMD	730	10	73	80	3000	OPD	4,5
SALLA L100	GMD	840	10	84	80	4000	OPD	5
SALLA L100	GMD	730	10	73	80	3000	OPD	5

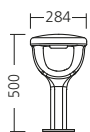
Luminous flux tolerance +/- 10%.



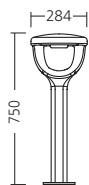
WMD



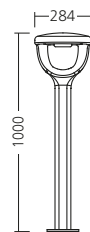
L035



L050



L075



L100

#### Mounting

Wall mounted (WMD)  
Ground mounted (GMD)

#### Light source

LED

#### Optical system

Opal diffuser (OPD)

#### Wiring

Electronic control gear FIX (ECG)

#### Materials

Housing: die-cast aluminium

Diffuser: transparent PC

#### Surface finish

ALL / NHG / OXI / Country collection

#### Service lifetime

50,000 hours/L70/B50

#### Ambient temperature

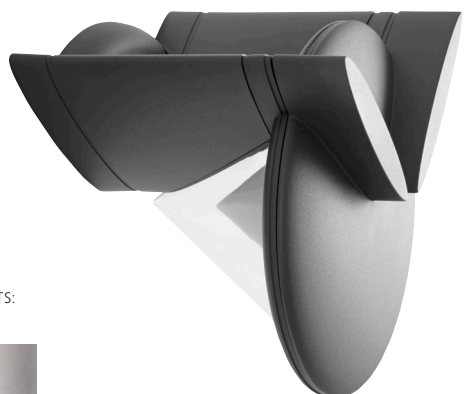
From -25 °C to +35 °C



**NOELA**



# NOELA



COLOUR VARIANTS:

ALL



NHG



OXI

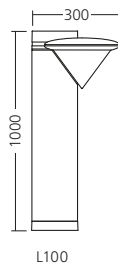
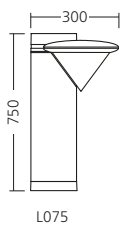
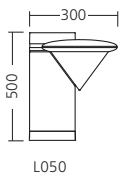
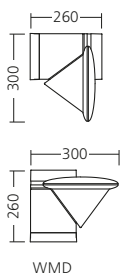


COUNTRY



TYPE	MOUNTING TYPE	NET LUMEN OUTPUT (at Ta = 25 °C) (lm)	POWER CONSUMPTION (W)	SYSTEM EFFICACY (lm/W)	COLOUR RENDERING INDEX CRI (Ra)	CORRELATED COLOUR TEMPERATURE CCT (K)	BEAM ANGLE (C0-180, C90-270)	WEIGHT (kg)
NOELA	WMD	1100	20	55	80	4000	OPD	4,0
NOELA	WMD	1050	20	53	80	3000	OPD	4,0
NOELA L050	GMD	1100	20	55	80	4000	OPD	5,6
NOELA L050	GMD	1050	20	53	80	3000	OPD	5,6
NOELA L075	GMD	1100	20	55	80	4000	OPD	7,2
NOELA L075	GMD	1050	20	53	80	3000	OPD	7,2
NOELA L100	GMD	1100	20	55	80	4000	OPD	8,8
NOELA L100	GMD	1050	20	53	80	3000	OPD	8,8

Luminous flux tolerance +/- 10%.



#### Mounting

Wall mounted (WMD)  
Ground mounted (GMD)

#### Light source

LED

#### Optical system

Opal diffuser (OPD)

#### Wiring

Electronic control gear FIX (ECG)

#### Materials

Housing: die-cast aluminium  
Diffuser: transparent PC

#### Surface finish

NHG / ALL / OXI / Country collection

#### Service lifetime

50,000 hours/L70/B50

#### Ambient temperature

From -25 °C to +35 °C



**JORY**



# JORY

COLOUR  
VARIANTS:

ALL

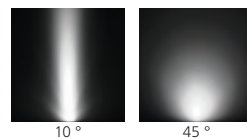
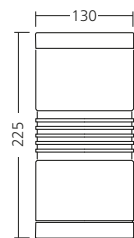


NHG



TYPE	MOUNTING TYPE	NET LUMEN OUTPUT (at Ta = 25 °C) (lm)	POWER CONSUMPTION (W)	SYSTEM EFFICACY (lm/W)	COLOUR RENDERING INDEX CRI (Ra)	CORRELATED COLOUR TEMPERATURE CCT (K)	BEAM ANGLE (C0-180, C90- 270)	WEIGHT (kg)
JORY	SFD	550	12	45	80	4000	45°	2,4
JORY	SFD	550	12	45	80	3000	45°	2,4
JORY	SFD	865	12	73	80	4000	10°	2,4
JORY	SFD	865	12	73	80	3000	10°	2,4

Luminous flux tolerance +/- 10%.

**Mounting**

Surfaced (SFD)

**Light source**

LED

**Optical system**

Reflector

**Wiring**

Electronic control gear FIX (ECG)

**Materials**

Housing: die-cast aluminium

Cover: transparent hardened glass

**Surface finish**

ALL / NHG

**Service lifetime**

50,000 hours/L70/B50

**Ambient temperature**

From -25 °C to +35 °C

# JORY WALL S

COLOUR  
VARIANTS:

ALL

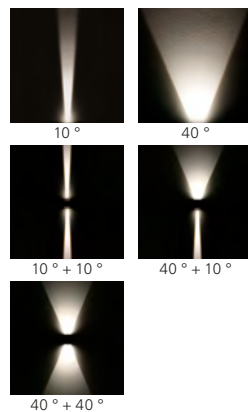
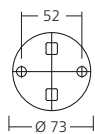
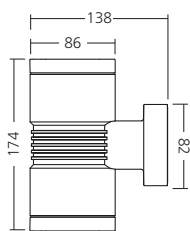


NHG



TYPE	MOUNTING TYPE	NET LUMEN OUTPUT (at Ta = 25 °C) (lm)	POWER CONSUMPTION (W)	SYSTEM EFFICACY (lm/W)	COLOUR RENDERING INDEX CRI (Ra)	CORRELATED COLOUR TEMPERATURE CCT (K)	BEAM ANGLE (C0-180, C90- 270)	WEIGHT (kg)
JORY WALL S	WMD	305	9	51	80	4000	40°	1,8
JORY WALL S	WMD	305	9	51	80	3000	40°	1,8
JORY WALL S	WMD	610	18	102	80	4000	40° + 40°	1,8
JORY WALL S	WMD	610	18	102	80	3000	40° + 40°	1,8
JORY WALL S	WMD	670	18	65	80	4000	40° + 10°	1,8
JORY WALL S	WMD	670	18	65	80	3000	40° + 10°	1,8
JORY WALL S	WMD	360	9	60	80	4000	10°	1,8
JORY WALL S	WMD	360	9	60	80	3000	10°	1,8
JORY WALL S	WMD	650	18	106	80	4000	10° + 10°	1,8
JORY WALL S	WMD	650	18	106	80	3000	10° + 10°	1,8

Luminous flux tolerance +/- 10%.



**Mounting**

Wall mounted (WMD)

**Light source**

LED

**Optical system**

Reflector

**Wiring**

Electronic control gear FIX (ECG)

**Materials**

Housing: die-cast aluminium

Cover: transparent hardened glass

**Surface finish**

ALL / NHG

**Service lifetime**

50,000 hours/L70/B50

**Ambient temperature**

From -25 °C to +35 °C

# JORY WALL M

COLOUR  
VARIANTS:

ALL

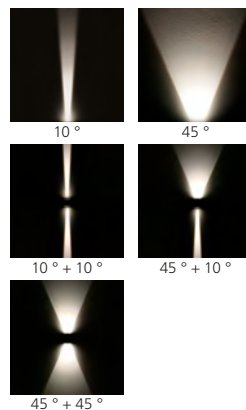
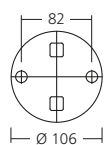
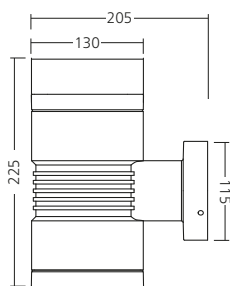


NHG



TYPE	MOUNTING TYPE	NET LUMEN OUTPUT (at Ta = 25 °C) (lm)	POWER CONSUMPTION (W)	SYSTEM EFFICACY (lm/W)	COLOUR RENDERING INDEX CRI (Ra)	CORRELATED COLOUR TEMPERATURE CCT (K)	BEAM ANGLE (C0-180, C90- 270)	WEIGHT (kg)
JORY WALL M	WMD	550	12	45	80	4000	45°	2,8
JORY WALL M	WMD	550	12	45	80	3000	45°	2,8
JORY WALL M	WMD	1250	24	51	80	4000	45° + 45°	2,9
JORY WALL M	WMD	1250	24	51	80	3000	45° + 45°	2,9
JORY WALL M	WMD	1450	24	61	80	4000	45° + 10°	2,9
JORY WALL M	WMD	1450	24	61	80	3000	45° + 10°	2,9
JORY WALL M	WMD	865	12	73	80	4000	10°	2,8
JORY WALL M	WMD	865	12	73	80	3000	10°	2,8
JORY WALL M	WMD	1700	24	72	80	4000	10° + 10°	2,9
JORY WALL M	WMD	1700	24	72	80	3000	10° + 10°	2,9

Luminous flux tolerance +/- 10%.



#### Mounting

Wall mounted (WMD)

#### Light source

LED

#### Optical system

Reflector

#### Wiring

Electronic control gear FIX (ECG)

#### Materials

Housing: die-cast aluminium

Cover: transparent hardened glass

#### Surface finish

ALL / NHG

#### Service lifetime

50,000 hours/L70/B50

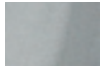
#### Ambient temperature

From -25 °C to +35 °C

# JORY FLOOD S

COLOUR  
VARIANTS:

INX

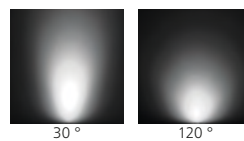
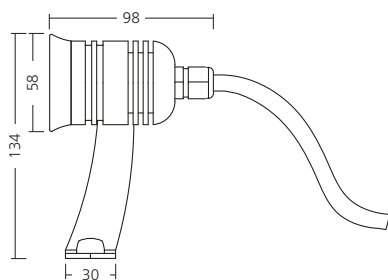


BRZ



TYPE	MOUNTING TYPE	NET LUMEN OUTPUT (at Ta = 25 °C) (lm)	POWER CONSUMPTION (W)	SYSTEM EFFICACY (lm/W)	COLOUR RENDERING INDEX CRI (Ra)	CORRELATED COLOUR TEMPERATURE CCT (K)	BEAM ANGLE (C0-180, C90- 270)	WEIGHT (kg)
JORY FLOOD S	WMD	245	5	55	80	3000	30°	0,5
JORY FLOOD S	WMD	150	5	33	80	3000	120°	0,5

Luminous flux tolerance +/- 10%.



**Mounting**

Wall mounted (WMD)

**Light source**

LED

**Optical system**

Reflector

**Wiring**

Electronic control gear FIX (ECG)

**Materials**

Housing: die-cast aluminium

Cover: transparent hardened glass

**Surface finish**

INX / BRZ

**Service lifetime**

40,000 hours/L70/B50

**Ambient temperature**

From -25 °C to +35 °C

# JORY FLOOD M

COLOUR VARIANTS:

ALL

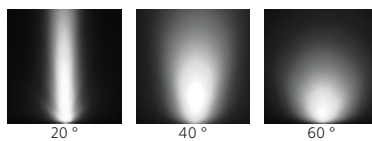
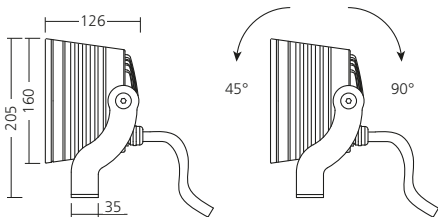


NHG



TYPE	MOUNTING TYPE	NET LUMEN OUTPUT (at Ta = 25 °C) (lm)	POWER CONSUMPTION (W)	SYSTEM EFFICACY (lm/W)	COLOUR RENDERING INDEX CRI (Ra)	CORRELATED COLOUR TEMPERATURE CCT (K)	BEAM ANGLE (C0-180, C90-270)	WEIGHT (kg)
JORY FLOOD M	WMD	1550	20	78	80	3000	60°	2,6
JORY FLOOD M	WMD	1600	20	81	80	4000	60°	2,6
JORY FLOOD M	WMD	2150	33	65	80	3000	60°	2,6
JORY FLOOD M	WMD	2250	33	69	80	4000	60°	2,6
JORY FLOOD M	WMD	1500	20	75	80	3000	40°	2,6
JORY FLOOD M	WMD	1550	20	78	80	4000	40°	2,6
JORY FLOOD M	WMD	2150	33	65	80	3000	40°	2,6
JORY FLOOD M	WMD	2250	33	69	80	4000	40°	2,6
JORY FLOOD M	WMD	1600	20	80	80	3000	20°	2,6
JORY FLOOD M	WMD	1700	20	84	80	4000	20°	2,6
JORY FLOOD M	WMD	2300	33	70	80	3000	20°	2,6
JORY FLOOD M	WMD	2450	33	74,5	80	4000	20°	2,6

Luminous flux tolerance +/- 10%.



#### Mounting

Wall mounted (WMD)

#### Light source

LED

#### Optical system

Reflector

#### Wiring

Electronic control gear FIX (ECG)

#### Materials

Housing: die-cast aluminium

Cover: transparent hardened glass

#### Surface finish

ALL / NHG

#### Service lifetime

50,000 hours/L70/B50

#### Ambient temperature

From -25 °C to +35 °C



**NESTA**



# NESTA S

COLOUR  
VARIANTS:

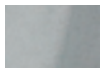
NGG



ALL

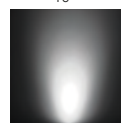
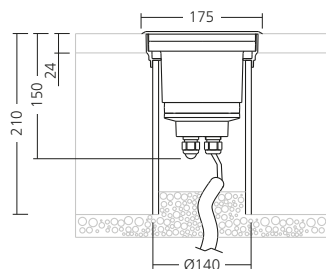
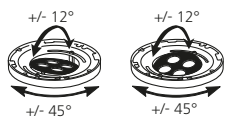


INX



TYPE	MOUNTING TYPE	NET LUMEN OUTPUT (at Ta = 25 °C) (lm)	POWER CONSUMPTION (W)	SYSTEM EFFICACY (lm/W)	COLOUR RENDERING INDEX CRI (Ra)	CORRELATED COLOUR TEMPERATURE CCT (K)	BEAM ANGLE (C0-180, C90- 270)	WEIGHT (kg)
NESTA S	GCD	770	12	65	80	4000	45°	2,6
NESTA S	GCD	770	12	65	80	3000	45°	2,6
NESTA S	GCD	810	12	68	80	4000	30°	2,6
NESTA S	GCD	810	12	68	80	3000	30°	2,6
NESTA S	GCD	860	12	71	80	4000	10°	2,6
NESTA S	GCD	860	12	71	80	3000	10°	2,6

Luminous flux tolerance +/- 10%.



**Mounting**

Ground recessed (GCD)

**Light source**

LED

**Optical system**

Lenses

**Wiring**

Electronic control gear FIX (ECG)

**Materials**

Housing: die-cast aluminium

Cover: transparent hardened glass

**Surface finish**

NGG / ALL / INOX AISI 316L

**Service lifetime**

50,000 hours/L70/B50

**Ambient temperature**

From -25 °C to +35 °C

# NESTA M

COLOUR VARIANTS:

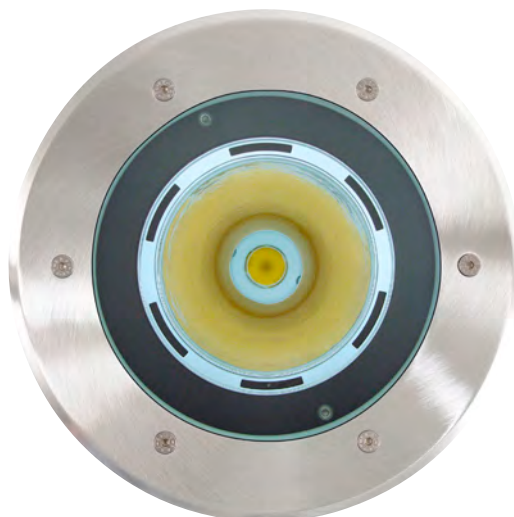
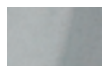
NGG



ALL

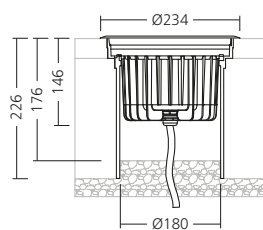


INX



TYPE	MOUNTING TYPE	NET LUMEN OUTPUT (at Ta = 25 °C) (lm)	POWER CONSUMPTION (W)	SYSTEM EFFICACY (lm/W)	COLOUR RENDERING INDEX CRI (Ra)	CORRELATED COLOUR TEMPERATURE CCT (K)	BEAM ANGLE (C0-180, C90-270)	WEIGHT (kg)
NESTA M	GCD	1550	20	78	80	3000	60°	4,2
NESTA M	GCD	1600	20	81	80	4000	60°	4,2
NESTA M	GCD	2150	33	65	80	3000	60°	4,2
NESTA M	GCD	2250	33	69	80	4000	60°	4,2
NESTA M	GCD	1500	20	75	80	3000	40°	4,2
NESTA M	GCD	1550	20	78	80	4000	40°	4,2
NESTA M	GCD	2150	33	65	80	3000	40°	4,2
NESTA M	GCD	2250	33	69	80	4000	40°	4,2
NESTA M	GCD	1600	20	80	80	3000	20°	4,2
NESTA M	GCD	1700	20	84	80	4000	20°	4,2
NESTA M	GCD	2300	33	70	80	3000	20°	4,2
NESTA M	GCD	2450	33	74.5	80	4000	20°	4,2
NESTA M	GCD	1850	20	94	80	3000	ASY	4,5
NESTA M	GCD	1950	20	99	80	4000	ASY	4,5
NESTA M	GCD	2500	33	76	80	3000	ASY	4,5
NESTA M	GCD	2600	33	79	80	4000	ASY	4,2

Luminous flux tolerance +/- 10%.



20 °



40 °



60 °

**Mounting**

Ground recessed (GCD)

**Light source**

LED

**Optical system**

Reflector

**Wiring**

Electronic control gear FIX (ECG)

**Materials**

Housing: die-cast aluminium

Cover: transparent hardened glass

**Surface finish**

NGG / ALL / INOX AISI 316L

**Service lifetime**

50,000 hours/L70/B50

**Ambient temperature**

From -25 °C to +35 °C



**ELAIN**



# ELAIN

COLOUR  
VARIANTS:

NGG



BGG



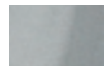
ALL



NHG



INX



TYPE	MOUNTING TYPE	NET LUMEN OUTPUT (at Ta = 25 °C) (lm)	POWER CONSUMPTION (W)	SYSTEM EFFICACY (lm/W)	COLOUR RENDERING INDEX CRI (Ra)	CORRELATED COLOUR TEMPERATURE CCT (K)	BEAM ANGLE (C0-180, C90- 270)	WEIGHT (kg)
ELAIN W0	RCS	350	8	44	80	4000	OPD	1,1
ELAIN W0	RCS	300	8	37	80	3000	OPD	1,1
ELAIN W1	RCS	350	8	44	80	4000	OPD	1,2
ELAIN W1	RCS	300	8	37	80	3000	OPD	1,2
ELAIN W2	RCS	350	8	44	80	4000	OPD	1,3
ELAIN W2	RCS	300	8	37	80	3000	OPD	1,3
ELAIN W3	RCS	350	8	44	80	4000	OPD	1,3
ELAIN W3	RCS	300	8	37	80	3000	OPD	1,3
ELAIN W4	RCS	115	15	8	80	4000	OPD	1,8
ELAIN W4	RCS	115	15	7	80	3000	OPD	1,8
ELAIN W4	RCS	40	9	5	80	4000	OPD	1,8
ELAIN W4	RCS	40	9	5	80	3000	OPD	1,8

Luminous flux tolerance +/- 10%.

W0  
(NGG, BGG, ALL)



W1  
(NGG, BGG, ALL)



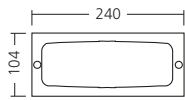
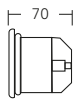
W2  
(INX)



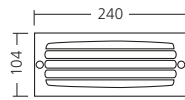
W3  
(INX)



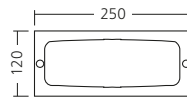
W4  
(NHG, ALL)



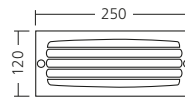
W0



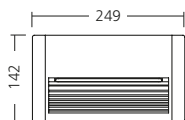
W1



W2



W3



W4

**Mounting**

Recessed (RCS)

**Light source**

LED

**Optical system**

Opal diffuser (OPD)

**Wiring**

Electronic control gear FIX (ECG)

**Materials**

Housing: die-cast aluminium

Diffuser: sanded glass (W0/1/2/3) / opal PC (W4)

Cover: die-cast aluminium (W0/1/4) /

stainless steel (W2/3)

**Surface finish**

NGG / BGG / ALL / INX / NHG

**Service lifetime**

50,000 hours/L70/B50

**Ambient temperature**

From -25 °C to +35 °C



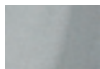
**HARM**



# HARM G

COLOUR  
VARIANTS:

INX



BRZ



TYPE	MOUNTING TYPE	NET LUMEN OUTPUT (at Ta = 25 °C) (lm)	POWER CONSUMPTION (W)	SYSTEM EFFICACY (lm/W)	COLOUR RENDERING INDEX CRI (Ra)	CORRELATED COLOUR TEMPERATURE CCT (K)	BEAM ANGLE (C0-180, C90- 270)	WEIGHT (kg)
HARM G1	GCD	245	5	55	80	3000	30°	0,6
HARM G1	GCD	150	5	33	80	3000	OPD	0,6
HARM G2	GCD	85	5	20	80	3000	OPD	0,6
HARM G3	GCD	35	5	8	80	3000	OPD	0,6
HARM G4	GCD	20	5	5	80	3000	OPD	0,6
HARM G5	GCD	45	5	10	80	3000	OPD	0,6
HARM G6	GCD	25	5	6	80	3000	OPD	0,6

Luminous flux tolerance +/- 10%.



G1



G2



G3



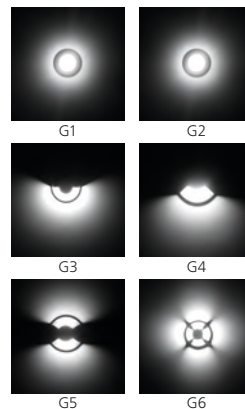
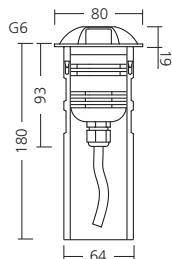
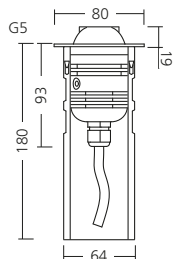
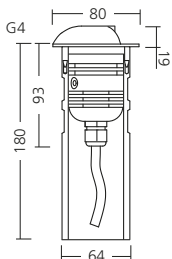
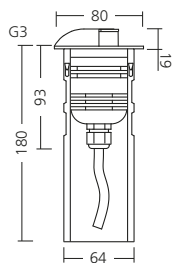
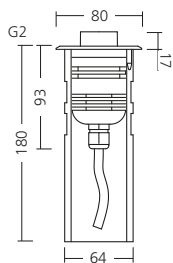
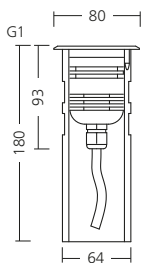
G4



G5



G6



**Mounting**

Ground recessed (GCD)

**Light source**

LED

**Optical system**

Lens (G1) / opal diffuser (G2/3/4/5/6)

**Wiring**

Electronic control gear FIX (ECG)

**Materials**

Housing: die-cast aluminium

Cover: transparent hardened glass (G1) / opal PC (G2/3/4/5/6)

**Surface finish**

BRZ / INX

**Service lifetime**

40,000 hours/L70/B50

**Ambient temperature**

From -25 °C to +35 °C

# HARM W

COLOUR  
VARIANTS:

INX



BRZ



TYPE	MOUNTING TYPE	NET LUMEN OUTPUT (at Ta = 25 °C) (lm)	POWER CONSUMPTION (W)	SYSTEM EFFICACY (lm/W)	COLOUR RENDERING INDEX CRI (Ra)	CORRELATED COLOUR TEMPERATURE CCT (K)	BEAM ANGLE (C0-180, C90- 270)	WEIGHT (kg)
HARM W1	RCS	130	5	33	80	3000	OPD	0,5
HARM W2	RCS	85	5	20	80	3000	OPD	0,5
HARM W3	RCS	35	5	8	80	3000	OPD	0,5
HARM W4	RCS	20	5	5	80	3000	OPD	0,5
HARM W5	RCS	45	5	10	80	3000	OPD	0,5
HARM W6	RCS	25	5	6	80	3000	OPD	0,5

Luminous flux tolerance +/- 10%.



W1



W2



W3



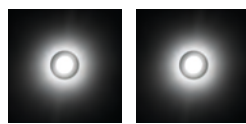
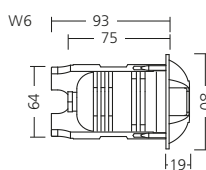
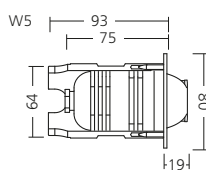
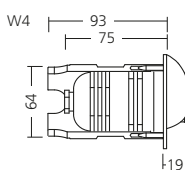
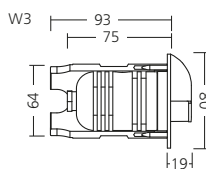
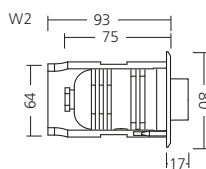
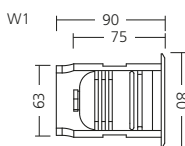
W4



W5



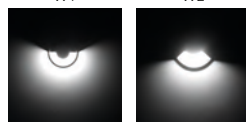
W6



W1



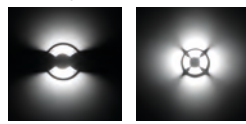
W2



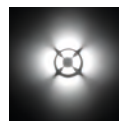
W3



W4



W5



W6

**Mounting**

Recessed (RCS)

**Light source**

LED

**Optical system**

Opal diffuser

**Wiring**

Electronic control gear FIX (ECG)

**Materials**

Housing: die-cast aluminium

Cover: opal PC

**Surface finish**

BRZ / INX

**Service lifetime**

40,000 hours/L70/B50

**Ambient temperature**

From -25 °C to +35 °C



**ENID**



# ENID

COLOUR VARIANTS:

NGG



BGG



ALL



NHG

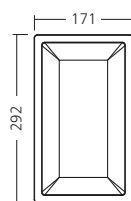
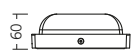


OXI

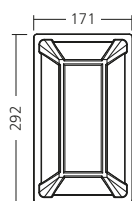
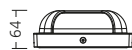


TYPE	MOUNTING TYPE	NET LUMEN OUTPUT (at Ta = 25 °C) (lm)	POWER CONSUMPTION (W)	SYSTEM EFFICACY (lm/W)	COLOUR RENDERING INDEX CRI (Ra)	CORRELATED COLOUR TEMPERATURE CCT (K)	BEAM ANGLE (C0-180, C90-270)	WEIGHT (kg)
ENID W1	WMD	490	12	41	80	4000	OPD	1,45
ENID W1	WMD	445	12	37	80	3000	OPD	1,45
ENID W2	WMD	490	12	41	80	4000	OPD	1,45
ENID W2	WMD	445	12	37	80	3000	OPD	1,45

Luminous flux tolerance +/- 10%.



W1



W2

**Mounting**

Wall mounted (WMD)

**Light source**

LED

**Optical system**

Opal diffuser (OPD)

**Wiring**

Electronic control gear FIX (ECG)

**Materials**

Housing: die-cast aluminium

Diffuser: opal PC

**Surface finish**

NGG / BGG / NHG / ALL / OXI

**Service lifetime**

50,000 hours/L70/B50

**Ambient temperature**

From -25 °C to +35 °C

